

## APPLICATION NOTE

GigE Firmware Update  
Mako G, Manta, and Prosilica CamerasV2.0.0  
2018-Mar-26

## Introduction

New feature introductions and product improvements are included in new firmware releases. All users are encouraged to use the latest firmware available and complete the firmware update if necessary. To determine the current firmware version loaded onto the camera, read the camera's Device Firmware feature using the Vimba Viewer, GigE SampleViewer, or third party applications such as NI Vision Acquisition Software.



Download the latest GigE firmware loader and *GigE Firmware Release Notes* from the Allied Vision website:

<http://www.alliedvision.com/en/support/firmware>

Vimba Viewer, GigE SampleViewer downloads:

<http://www.alliedvision.com/en/support/software-downloads>



### Saved camera UserSets

When new firmware contains a new feature or control, saved camera UserSets or ConfigFiles will be invalidated and erased!

Before loading new firmware, backup your current camera settings.

Vimba Viewer: select the **Save Camera Settings** icon from the **Cameras** window to export the camera settings file (XML file) to the host computer.

GigE SampleViewer: select the **Disk** icon from the **Cameras** window to export camera settings file (XML file) to the host computer.



### Possible material damage

Do not unplug the GigE cable or camera power supply during the update procedure.

## Prerequisites

The following items are required:

- Host computer with Windows® 10, Windows® 8.1, or Windows® 7 operating system

- Gigabit Ethernet network card and GigE cable



For hardware selection see Hardware Select for Allied Vision GigE Cameras application note at:

<http://www.alliedvision.com/en/support/technical-papers-knowledge-base>

- Mako G, Manta, Prosilica GE, GC, GT, GB, GX camera

Ensure that you have already installed your GigE camera and it is recognized on your system. See the GigE Installation Manual for more information.



GigE Installation Manual:

<http://www.alliedvision.com/en/support/technical-documentation>

## Update the firmware on your Allied Vision GigE camera

1. Download the appropriate GigE Firmware Loader on the Allied Vision website.
2. Ensure your camera is plugged in directly to the Gigabit Ethernet port on the host computer.
3. Launch the GigE firmware loader.



Figure 1: Welcome screen

- Click **Next**. The Firmware Loader displays a list of firmware included in the package.

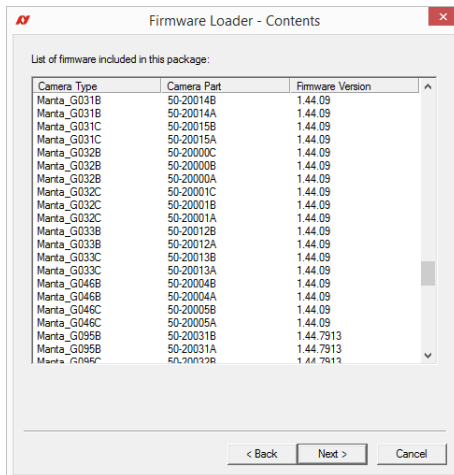


Figure 2: List of available camera updates

- Click **Next**. You can select your camera model on this screen.

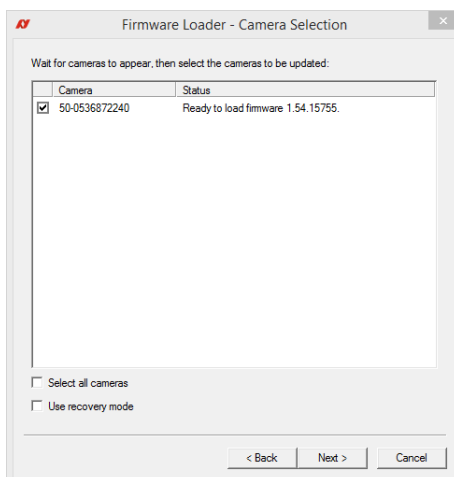


Figure 3: Camera selection for updating



### Recovery Mode

Select the **Use recovery mode** check box when the connected GigE camera is not found by the firmware loader, or when the GigE camera is listed as unavailable. When selected, power cycle the camera to enter the **Boot Loader** mode.

- Click **Next**.

- Click **Upload** to start the update. The existing firmware will be erased and the new firmware will be updated to the camera.

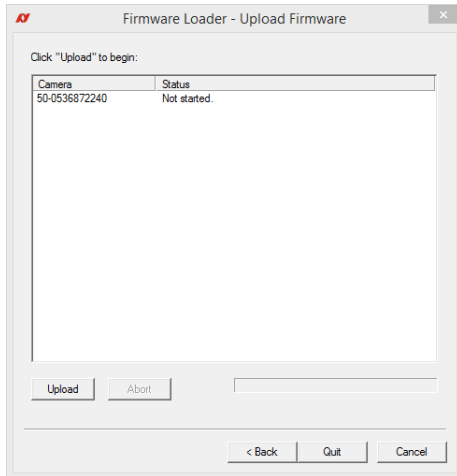


Figure 4: Upload start screen

- Click **Next** and then **Upload** to start the update procedure.



Do not unplug GigE cable or camera power supply during update procedure.

- The Firmware Loader will display a success status upon completion. Click **Quit** to exit the loader.

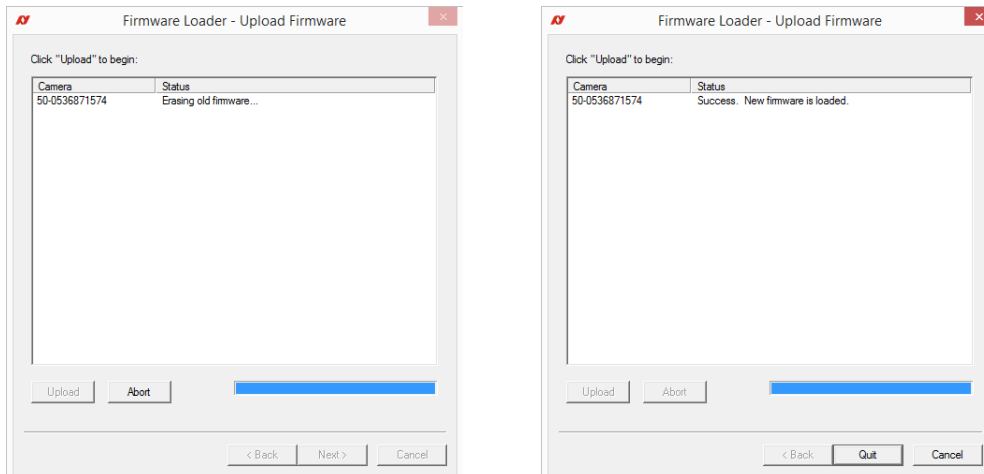


Figure 5: Status of update

**Power cycle after upgrade or downgrade**

You must always power cycle the camera after a firmware upgrade or downgrade.



Please contact [support@alliedvision.com](mailto:support@alliedvision.com) if you are unable to load camera firmware, or your camera is not recognized by the GigE Firmware Loader when using recovery mode.

For technical support, please contact [support@alliedvision.com](mailto:support@alliedvision.com).

For comments or suggestions regarding this document, please contact [info@alliedvision.com](mailto:info@alliedvision.com).

## Copyright and trademarks

All text, pictures, and graphics are protected by copyright and other laws protecting intellectual property. All content is subject to change without notice.

All trademarks, logos, and brands cited in this document are property and/or copyright material of their respective owners. Use of these trademarks, logos, and brands does not imply endorsement.

Copyright © 2018 Allied Vision GmbH. All rights reserved.