

APPLICATION NOTE

GigE Firmware Update
Mako G, Manta, and Prosilica Cameras

2016-Mar-17

Introduction

New feature introductions and product improvements motivate new firmware releases. All users are encouraged to use the newest firmware available and complete the firmware update if necessary. To determine the current firmware version loaded onto the camera, read the camera's Device Firmware feature using the Vimba Viewer, GigE SampleViewer, or third party applications such as NI Vision Acquisition Software.



Download the latest GigE firmware loader from the Allied Vision website:

<http://www.alliedvision.com/en/support/firmware>

Vimba Viewer, GigE SampleViewer downloads:

<http://www.alliedvision.com/en/support/software-downloads>



If new firmware contains a new feature/control, saved camera UserSets/ConfigFiles will be invalidated and erased!

Before loading new firmware, backup your current camera settings.

GigE SampleViewer: select the **Disk** icon from the **Cameras** window to export camera settings file (XML) to the host PC.

Vimba Viewer: select the **Save Camera Settings** icon from the **Cameras** window to export the camera settings file (XML) to the host PC.

Prerequisites

The following items are required:

- Host PC with Microsoft Windows® 7, Vista, or XP operating system
- Gigabit Ethernet network card and GigE cable



For hardware selection see Hardware Select for Allied Vision GigE Cameras application note at:

<http://www.alliedvision.com/en/support/technical-papers-knowledge-base>

- Mako G, Manta, Prosilica GE, GC, GT, GB, GX camera

Ensure that you have already installed your GigE camera and it is recognized on your system. See the GigE Installation Manual for more information.



GigE Installation Manual:

<http://www.alliedvision.com/en/support/technical-documentation>

Updating the camera

1. Download the appropriate GigE Firmware Loader from the Allied Vision website.
2. Ensure your camera is plugged in directly to your Gigabit Ethernet port. Launch the GigE firmware loader.



Figure 1: Info window / Welcome screen

3. Click **Next**. The Firmware Loader displays a list of firmware included in the package.

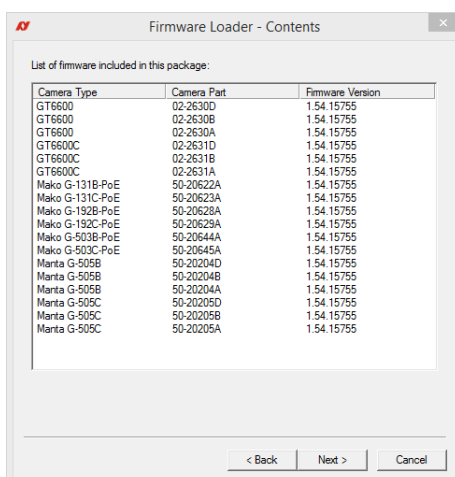


Figure 2: List of available camera updates

- Click **Next**. You can select your camera model on this page.

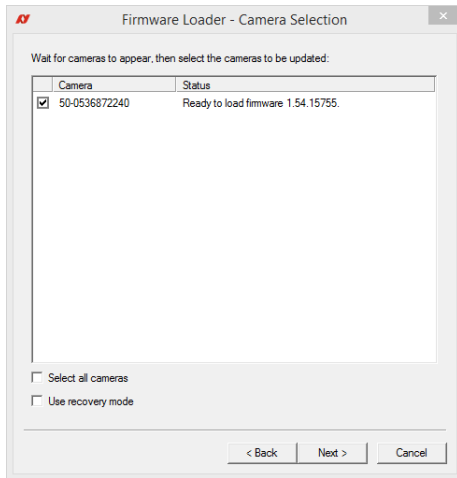


Figure 3: Camera selection for updating



Recovery Mode

Select the **Use recovery mode** check box if the connected GigE camera is not found by the firmware loaded, or if the GigE camera is listed as unavailable.

- Click **Next**.
- Click **Upload** to start the update. The existing firmware will be erased and the new firmware will be updated to the camera.

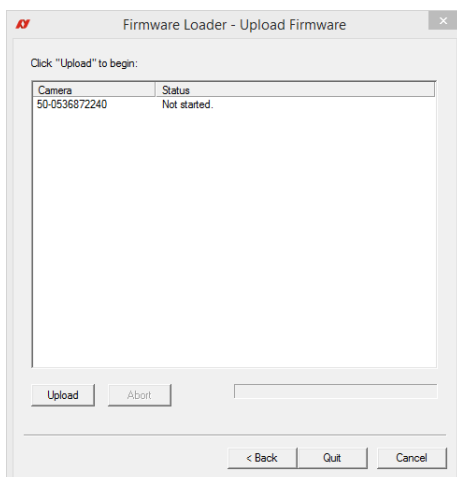


Figure 4: Upload start screen

- Click **Next** and then **Upload** to start the update procedure.



Do not unplug GigE cable or camera power supply during update procedure.

8. The Firmware Loader will display a success status upon completion. Click **Quit** to exit the loader.

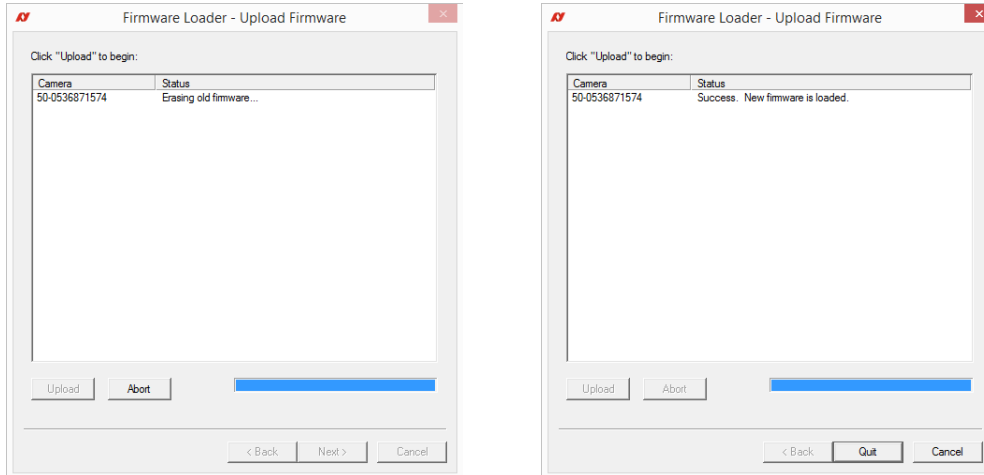


Figure 5: Status of update



Please contact support@alliedvision.com if you are unable to load camera firmware, or your camera is not recognized by the GigE Firmware Loader when using recovery mode.

Additional References

Technical manuals and GigE feature reference

<https://www.alliedvision.com/en/support/technical-documentation>

For technical support, please contact support@alliedvision.com.

For comments or suggestions regarding this document, please contact info@alliedvision.com.

Disclaimer

Due to continual product development, technical specifications may be subject to change without notice. All trademarks are acknowledged as property of their respective owners. We are convinced that this information is correct. We acknowledge that it may not be comprehensive. Nevertheless, Allied Vision cannot be held responsible for any damage in equipment or subsequent loss of data or whatsoever in consequence of this document.

For the latest version of this document, please visit the [Allied Vision documentation website](#).

Copyright © 2016 Allied Vision Technologies GmbH. All rights reserved.

This document was prepared by the staff of Allied Vision Technologies Canada (“Allied Vision”) and is the property of Allied Vision, which also owns the copyright therein. All rights conferred by the law of copyright and by virtue of international copyright conventions are reserved to Allied Vision. This document must not be copied, or reproduced in any material form, either wholly or in part, and its contents and any method or technique available there from must not be disclosed to any other person whatsoever without the prior written consent of Allied Vision.