

Manta

G-201-30fps



- 30.0 fps at full resolution
- PoE optional
- Angled-head and board level variants
- Video-iris lens control

基本描述

2 Megapixel industrial camera with GigE Vision interface

Manta G-201-30fps is a machine vision camera that incorporates the high quality Type 1/1.8 (8.923 mm diagonal) Sony ICX274 CCD sensor. At full resolution, this camera runs 30.0 frames per second. With a smaller region of interest, higher frame rates are possible. Manta G-201-fps is offered in both monochrome and color models.

Manta is one of Allied Vision's versatile GigE Vision cameras with a wide range of features. Particular highlights are the three look-up tables, sophisticated color correction capabilities, a robust metal housing, and many modular options. By default monochrome models ship with protection glass B 270 (ASG) and color models ship with an IRC Hoya C-5000 IR cut filter.

Benefits and features:

- Monochrome (G-201B-30fps) and color (G-201C-30fps) models
- GigE Vision interface with Power over Ethernet option
- Screw mount RJ45 Ethernet connector for secure operation in industrial environments
- Supports cable lengths up to 100 meters (CAT-5e or CAT-6)
- Comprehensive I/O functionality for simplified system integration
- Popular C-Mount lens mount
- Easy camera mounting via standard M3 threads on top and bottom of housing or optional tripod adapter
- Easy software integration with Allied Vision's [Vimba SDK](#) and compatibility to the most popular [third party image-processing libraries](#).

Options:

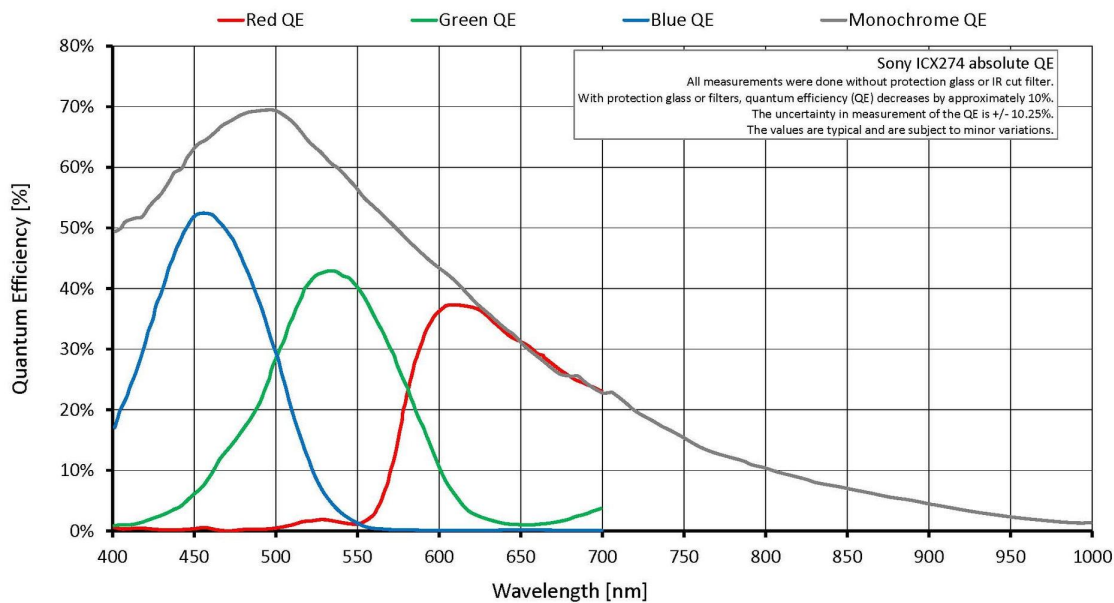
- Available with Power over Ethernet (PoE) compliant interface
- Available with CS-Mount or M12-Mount adapter
- Available with Protection glass B 270 (ASG), IRC type Jenofilt 217 (IR cut filter), IRC Hoya C-5000 (IR cut filter), IRP RG715 (IR pass filter), IRP RG830 (IR pass filter)
- Available with various angled-head housings or board level version
- Available with white medical design

See the [Modular Concept](#) for lens mount, housing variants, optical filters, case design, and other modular options. See the [Customization and OEM Solutions](#) page for additional options.

性能参数

Manta	G-201-30fps
接口	IEEE 802.3 1000BASE-T, IEEE 802.3af (PoE) optional
分辨率	1624 (H) × 1234 (V)
传感器	Sony ICX274
传感器类型	CCD Progressive
传感器尺寸	Type 1/1.8
像元尺寸	4.4 μm × 4.4 μm
标准镜头接口	C-Mount
最大满帧帧率	30.0 fps
ADC	12 bit
缓存 (RAM)	32 MByte
非易失性内存 (Flash)	192 KByte (for selected models only)
	输出
Bit位数	8-12 bit
黑白像素格式	Mono8, Mono12, Mono12Packed
YUV彩色像素格式	YUV411Packed, YUV422Packed, YUV444Packed
RGB彩色像素格式	RGB8Packed, BGR8Packed
原始像素格式	BayerRG8, BayerRG12Packed, BayerRG12
	通用输入输出(GPIOs)
光耦 I/Os	2 inputs, 2 outputs
RS232	1
	工作条件/尺寸
工作温度	+5 °C to +45 °C ambient (without condensation)
电源要求 (DC)	8 to 30 VDC; PoE

Manta	G-201-30fps
功耗	4.6 W at 12 VDC; 5.4 W PoE
重量	200 g; 210 g (PoE)
尺寸(L × W × H in mm)	86.4 × 44 × 29 (including connectors)
符合规范	CE: 2014/30/EU (EMC), 2011/65/EU, including amendment 2015/863/EU (RoHS); FCC Class B; CAN ICES-003



特性

Image optimization features:

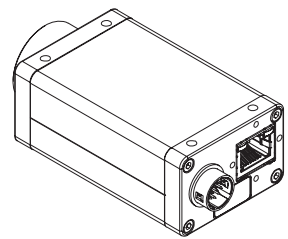
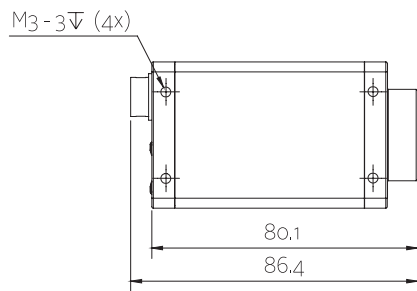
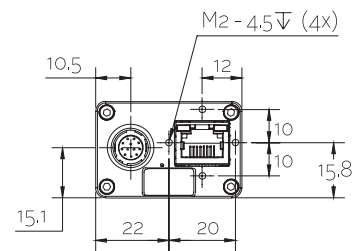
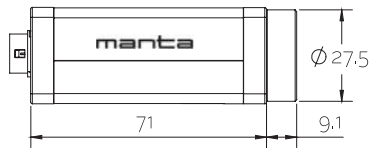
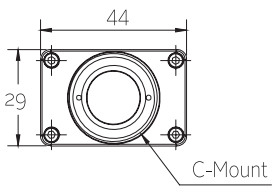
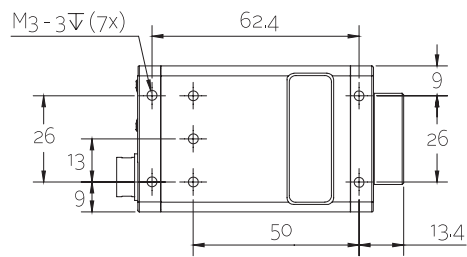
- Auto gain (manual gain control: 0 to 31 dB; 1 dB increments)
- Auto exposure (10 μ s to 60 s; 1 μ s increments)
- Auto white balance (G-201C-fps only)
- Binning
- Black level (offset)
- Color correction, hue, saturation (G-201C-fps only)
- Decimation
- Gamma correction
- Three look-up tables (LUTs) (3)
- Region of interest (ROI), separate ROI for auto features
- ReverseX (G-201B-fps only)



Camera control features:

- Auto-iris (video type)
- Event channel
- Image chunk data
- Storable user sets
- StreamBytesPerSecond (bandwidth control)
- Stream hold
- Sync out modes: Trigger ready, input, exposing, readout, imaging, strobe, GPO
- Non-volatile memory 192 KByte (for selected models only)

外形尺寸





应用场景

Manta G-201-30fps is a fast GigE Vision camera with PoE option. Thanks to its flexibility (angled head, board level version with separate sensor head), it can be used for a variety of applications. The Manta incorporates three LUTs (separate R, G, and B control), color correction, and many more features.

Typical applications:

- Machine vision
- ITS (Intelligent Traffic Solutions)
- Entertainment and multimedia applications
- 3D applications
- ITS (Intelligent traffic solutions)
- ... and many more